

ACTIVITY REPORT 2022



Unity Foundation
EDUCATION FOR EMPOWERMENT

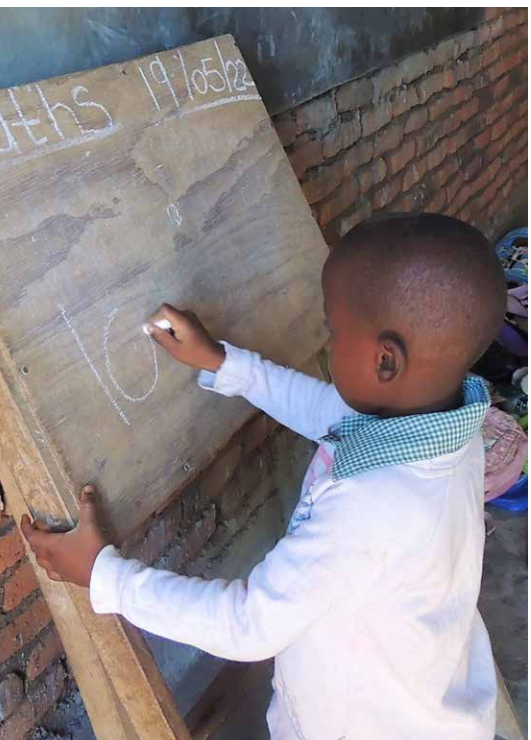


TABLE OF CONTENTS

03	EDITORIAL
04	ABOUT OUR ORGANIZATION
05	OUR VISION OF DEVELOPMENT
09	FRAMEWORK AGREEMENT 2022-2026
10	ONE PROGRAM, THREE LINES OF ACTION
12	COMMUNITY SCHOOLS
14	PREPARATION FOR SOCIAL ACTION PROGRAM
16	TRAINING CENTERS
18	OUR PARTNERS IN 2022
18	CAMBODIA COMMUNITY SCHOOLS AND PREPARATION FOR SOCIAL ACTION
20	CENTRAL AFRICAN REPUBLIC COMMUNITY SCHOOLS, PREPARATION FOR SOCIAL ACTION AND TRAINING CENTER
22	COLOMBIA PREPARATION FOR SOCIAL ACTION
24	MALAWI COMMUNITY SCHOOLS AND TRAINING CENTER
26	UGANDA PREPARATION FOR SOCIAL ACTION
28	ZAMBIA COMMUNITY SCHOOLS AND PREPARATION FOR SOCIAL ACTION
30	VISITS
36	DEVELOPMENT EDUCATION IN LUXEMBOURG
42	A BIG THANK YOU TO OUR SUPPORTERS!
43	OUR FINANCING
46	OUR TEAM

CORDE	Cambodian Organization for Research, Development and Education
FUNDAEC	Fundación para la Aplicación y Enseñanza de las Ciencias
BIDO	Bahá'í International Development Organization
MFEA	Ministry of Foreign and European Affairs
PSA	Preparation for Social Action
SAT	Tutorial Learning System



Dear friends of Unity Foundation,

On behalf of the Board of Directors and the entire team, I am pleased to present our 2022 Activity Report, which should give you an overview of the work of our foundation and our partners over the past year.

The beginning of 2022 was marked by the **signing of our 2nd framework agreement with the Ministry of Foreign and European Affairs (MFEA) for 2022-2026, with a total budget of €4,144,166.73**. This renewal of our partnership with the Ministry is a strong sign of mutual trust and provides us with stability that allows for the long-term planning needed in the field of education and capacity building, especially in a context of seemingly endless crises.

At Unity Foundation, we believe that sustainable development must be driven locally, which is why we work with competent partner organizations in the field. **The transformation of individuals and communities that results from their work, which you will read about in this report, speaks for itself and encourages us to continue on this path.**

Furthermore, **we are proud of the fact that our development education project in Luxembourg is now in its seventh consecutive year**. Considering young people as potential protagonists of social progress in Luxembourg, we accompany them to critically analyze the principles and current practices of development, to reflect on the purpose of their education and to develop their motivation and capacities to become actors of social progress.

Finally, I would like to **express my heartfelt thanks to the MFEA, our partner companies, the municipalities, the foundations and all the people** who provide us with valuable and uninterrupted support. It is obvious that all our activities could not be realized without your contributions.

Looking forward to meeting you soon and enjoy your reading!

Fernand SCHABER
President of Unity Foundation



ABOUT OUR ORGANIZATION

Founded in 1991, Unity Foundation is a Luxembourg-based NGO that promotes community empowerment through education. We work with a network of local partners in Latin America, Africa and Southeast Asia and support their efforts to empower their communities to take charge of their own development through three lines of action: community schools, the Preparation for Social Action (PSA) program and training centers.

Since 2016, we have also been carrying out development education activities in Luxembourg that allow young people from 11 years old onwards and adults to reflect on their potential and their role in bringing about positive change around them. Through various educational materials, participants explore together how to apply the universal principles and values at the heart of development in their own lives and environments. We also organize awareness-raising events open to the general public that aim to share these themes of reflection with audiences of various ages and backgrounds.

All our projects are co-financed by the Luxembourg Ministry of Foreign and European Affairs.

UNITY FOUNDATION IN A FEW NUMBERS

A team of
6
people (4 FTE)

Active in
7 countries:

- Cambodia
- Central African Republic
- Colombia
- Luxembourg
- Malawi
- Uganda
- Zambia

4
Lines of action:

- Community Schools
- Preparation for Social Action
- Training Centers
- Development Education

More than
30
years of experience
and collaboration
with local partners

OUR VISION OF DEVELOPMENT

In collaboration with our local partners, we have adopted a vision of development that guides and influences the way projects are carried out. Some of the principles at the heart of this vision are the following.

Every human being is endowed with inherent potentialities that can be revealed through adequate education.

According to this vision, the populations we work with are not seen as helpless victims or as passive recipients of external aid. Rather, our development efforts seek to tap into the vast reservoir of capacity of local populations and empower them to become the protagonists of their own development.

Development has both a material and a moral dimension, and these two aspects must progress coherently.

For development projects to achieve their objective of increasing the prosperity of a people, they cannot simply define material goals, such as building infrastructure or increasing the income of inhabitants. The progress and well-being of a population can only be achieved and sustained if individuals develop qualities and attitudes such as selflessness, honesty, and perseverance, and if communities learn to work together in unity. Thus, the educational programs we support are not only about providing instruction to children or imparting knowledge and skills to young people and adults; they also enable those who take part in them to acquire a virtuous character, to reflect on the moral implications of their daily choices and to learn to create environments of unity based on diversity in their communities.

Achieving equality between women and men is a prerequisite for prosperity.

In order for a community to develop, it is necessary that women have the same opportunities as men to access education and flourish, so that men and women can collaborate on an equal footing in all areas of human activity.

OUR CORE VALUES





WHY “UNITY” FOUNDATION?

At Unity Foundation, unity is a principle that we hold dear and that is manifested in our vision and action on three levels.

First, we believe that **humanity, in all its diversity, is fundamentally one human family.** Therefore, the well-being of any segment of humanity is inextricably linked to the well-being of all. As such, we believe that it is necessary for the wealthier segments of humanity to support those who do not yet have access to all the means necessary to realize their full potential. While we are driven by this sense of responsibility – which is the very reason for the existence of Unity Foundation – our awareness of the oneness of humanity protects us from feelings of superiority and the paternalism that might result from it: according to this principle, each people has the right and the responsibility to mark out the path of its own progress. Every people and every nation has a vital contribution to make in constructing a new society characterized by principles such as harmony, justice and prosperity.



Second, we believe that **the success of any endeavor depends on the ability of its participants to work together in unity**. Whether within our team in Luxembourg or with our partners in the field, we are constantly striving to achieve greater degrees of unity of thought and action and use consultation as a means of exploring reality together to arrive at a common vision and understanding of where we are and where we want to go.

Finally, **building unity is also one of the goals of our actions** in Luxembourg and around the world. All of our programs include a moral education dimension that cultivates in participants qualities and attitudes that are essential for living in harmony and **creating environments of unity in diversity**, such as honesty, integrity, freedom from prejudice and selflessness. As a result of their participation in these programs, the capacity of individuals to cooperate is strengthened and they engage in concrete actions to serve their communities, which in turn strengthen their social cohesion.



BAHÁ'Í INTERNATIONAL DEVELOPMENT ORGANIZATION (BIDO)

Established in 1983 as OSED (Office of Social and Economic Development), BIDO functions as a consulting agency for Unity Foundation. On all continents, BIDO accompanies development initiatives inspired by Bahá'í principles – such as the oneness of humanity in all its diversity, the elimination of all forms of prejudice, the equality of women and men, the need for universal education and the centrality of knowledge to social progress. These efforts seek to promote the social and material well-being of people from all walks of life, regardless of their beliefs or background.

BIDO's main objective is to facilitate learning in the development field by fostering and supporting action, reflection on action, study, consultation, accumulation and systematization of experience, conceptualization, and training. Often, development initiatives begin on a modest scale, but some efforts evolve into projects of a more sustained nature, with a corresponding degree of administrative structure. In some cases, NGOs emerge and gradually acquire the skills to work effectively with an external funding agency. Once they reach this level of maturity, BIDO suggests that we support some of these organizations. Thus, thanks to BIDO's recommendations, we are assured of working with partners who have demonstrated the necessary capacity to collaborate with an organization like ours. BIDO and the MFEA thus act as two filters ensuring the quality and integrity of our projects.

FRAMEWORK AGREEMENT 2022-2026

On February 2, 2022, we signed our second five-year framework agreement with the Ministry of Foreign and European Affairs (MFEA) of Luxembourg, in an online ceremony attended by Minister of Development Cooperation and Humanitarian Action Franz Fayot, Unity Foundation President Fernand Schaber and the rest of the team.

The MFEA is thus co-financing our development program to the tune of nearly 78%, with €3,232,000.00 granted out of a total budget of €4,144,166.73. In the continuity of the previous framework agreement, this funding will support community schools, the Preparation for Social Action program and training centers of our six partners, based in Cambodia, the Central African Republic, Colombia, Malawi, Uganda, and Zambia.

We are grateful to our local partners who have entrusted us with the financial support of their projects, and to the Ministry for its generous contribution and commitment to our work over the past three decades!

*Signing of our second framework agreement (2022-2026) on 2 February 2022.
Left: Franz Fayot, Minister for Development Cooperation and Humanitarian Action;
right: Fernand Schaber, President of Unity Foundation.*



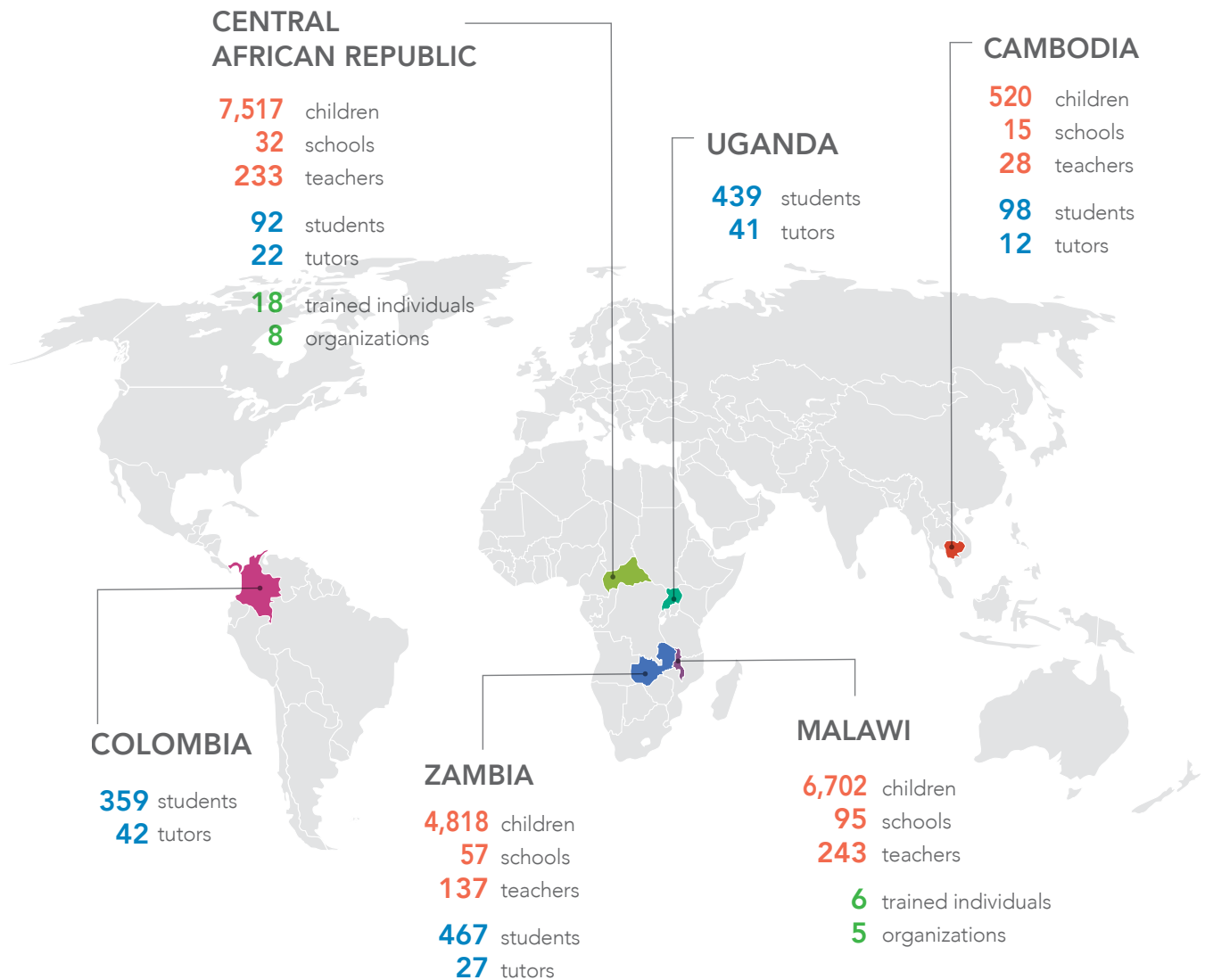


ONE PROGRAM, THREE LINES OF ACTION

All of our projects are carried out within the framework of a single development program entitled “**Capacity building for the integrated development of rural and peri-urban communities**”. Each of our partners follows one or more of the following three lines of action:

- the **Community Schools** program, dedicated to the training of teachers and the education of children from pre-school level
- The **Preparation for Social Action (PSA) program**, which builds capacity in youth and adults to promote the well-being of their communities and implement projects to meet their needs in areas such as education, sustainable agriculture, environmental conservation and health
- **Training Centers**, which bring together organizations promoting community schools in a dozen African countries, in order to identify, analyze and disseminate the learning generated in the development of community schools.

2022 AT A GLANCE



Community Schools

19,557 children
199 schools
641 teachers

Preparation for social action

1,455 students
144 tutors

Training centers

24 trained individuals
13 organizations

COMMUNITY SCHOOLS

In 2022, we supported the Community Schools program of four partners: Cambodia, Malawi, the Central African Republic, and Zambia. The aim of this program is to build the capacity of individuals and communities to meet the educational needs of their children.

Community schools provide pre-school, primary and, when more developed, secondary education. Often, schools are established in remote locations where there are few or no schools. The work of our local partners begins with raising awareness in the community about the importance of education. The choice to create a school is the result of a community decision, which greatly contributes to its sustainability. In a second step, designated individuals attend a teacher training program and are supported by other community members to establish and maintain a community school.

The growth of these schools occurs organically: most often the schools begin with a single preschool class to which additional teachers and grade levels are added each year. In many cases, the school begins in the shade of a tree or in a private home, until it grows and land is acquired for a dedicated building.

Community participation and ownership are at the heart of the project: the community is actively involved in all stages of the school's development.



HOW DOES COMMUNITY INVOLVEMENT IN THE SCHOOL MANIFEST ITSELF?

The community's ownership of the school and its participation in the management and development of the school is manifested in a variety of ways, for example:

- The inhabitants themselves provide the materials to build the school building;
- Parents pay a fee that helps pay the teachers and maintain the school;
- Some schools have parent associations that provide various forms of support to the school;
- Some schools hold parent seminars to discuss the importance of education for the community;
- The school management committee is in close contact with community leaders, community members and in continuous conversation with parents.

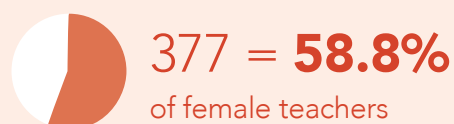
HOW ARE TEACHERS TRAINED?

Teachers are trained gradually at different levels from kindergarten to elementary school, in seminars lasting several weeks. The training includes the study of the curriculum for the teacher's assigned grade (drawing primarily from national curricula and other teaching materials), selected units of the PSA program, and materials on the moral education program being taught. After the initial training seminar, teachers continue to be accompanied throughout the year.

WHAT IS THE PLACE OF WOMEN AND GIRLS IN SCHOOLS?

In 2022, 51.3% of students in community schools are girls – a remarkable achievement considering that cultural norms in the regions where our partners work tend to prioritize the education of boys. Our partners achieve this through active efforts to raise community awareness of the importance of girls' education. Furthermore, in 2022, 58.8% of teachers in community schools are women, a result that also contrasts with local realities.

In 2022:



PREPARATION FOR SOCIAL ACTION PROGRAM

In 2022, we supported the Preparation for Social Action program of five partners: in Cambodia, the Central African Republic, Colombia, Uganda, and Zambia.

The Preparation for Social Action (PSA) program empowers youth and adults to become promoters of the well-being of their communities. It is conducted in the form of study groups, each consisting of 10 to 15 students and a tutor who meet approximately 12 to 15 hours per week. It involves the study of 18 textbooks, grouped into six blocks, which are designed to develop the participants' capabilities in the areas of language, mathematics, science, and processes of community life.

Community service is the core of the program. The program teaches participants to identify the needs of their communities and to find ways to meet those needs by applying the knowledge they have gained. Based on their study and reading of their reality, students launch initiatives in diverse areas such as sustainable agricultural production, animal husbandry, environmental preservation, preschool education, health, and income-generating activities. As groups progress through the program, their acts of service become increasingly complex and have a growing impact on the community. Acts of service lead to service projects of several months, and in some cases, to productive projects.



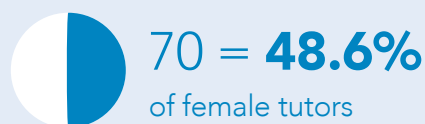
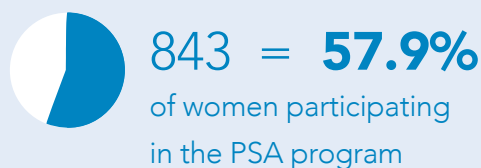
A PROGRAM WITH A LONG HISTORY

The PSA program originated in Colombia and builds on the experience of FUNDAEC's "Tutorial Learning System" (SAT), which has been successfully used in rural communities in Latin America for over 20 years. Since its inception, the SAT program has reached some 300,000 youth in Colombia and other Latin American countries. In response to the interest expressed by a growing number of organizations in adopting SAT, FUNDAEC modified some of the program's content and in the mid-2000s created the PSA program, which is offered as a non-formal education program. Currently, a global network of about ten organizations in Africa, Asia and Latin America is implementing the PSA program, five of which are supported by Unity Foundation.

HOW DOES THE PROGRAM CONTRIBUTE TO THE EMPOWERMENT OF WOMEN?

In 2022, 57.9% of PSA program participants and 48.6% of tutors are women. Reports and testimonials from women indicate that the program is helping them to develop their language skills, which increases their confidence in their abilities and allows them to express their thoughts more freely in their communities. In addition, there are many testimonials of women who have engaged in agricultural, educational, or micro-enterprise activities as a result of their participation in the program, discovering unsuspected abilities and playing a role in their community that they had not imagined they could have.

In 2022:



TRAINING CENTERS

Based on their rich experience, some of our partners have expanded their activities to support emerging development organizations promoting the establishment of community schools in other African countries: the Ahdieh Foundation and the Bambino Foundation have begun to serve as training centers for French-speaking and English-speaking African countries, respectively, to identify, analyze, and disseminate the learnings generated in the development of community school.



In the context of these training centers, resource persons organize seminars during which heads of organizations, faced with similar challenges, can learn from each other and define common objectives. They also carry out visits of accompaniment to provide support and ensure the capitalization of the learning that emerges from the different countries.

The Ahdieh Foundation and Bambino Foundation accompany organizations from the following countries:

- Côte d'Ivoire, Democratic Republic of Congo, Republic of Congo, Chad;
- Kenya, Eswatini, Tanzania and Zambia.

*Ruaha Muongo Foundation's coordinators (Tanzania)
with Bambino Foundation's coordinators*

OUR PARTNERS IN 2022



CAMBODIA | COMMUNITY SCHOOLS AND PREPARATION FOR SOCIAL ACTION

OUR PARTNER

CORDE (Cambodian Organization for Research, Development and Education) was founded in 1994 by a group of refugees who returned to Cambodia to contribute to the education of children and youth who were deprived of it during wartime. We have been supporting CORDE's work since 2015.



HIGHLIGHTS OF 2022

In 2022, following two challenging years due to the covid-19 pandemic, the lifting of most restrictions gave new life to CORDE's activities. **Teachers worked with parents to facilitate the return of students to school**, and the community school coordination team visited villages throughout the country to try to revive schools that had been closed during the pandemic. Several meetings were held for parents to reflect on their involvement in the schools. In one case, this led to a group of mothers making educational materials for the school. In the community of KohKralor, a meeting attended by 18 parents led to an increase in the number of children enrolled in the community school from 30 students during the pandemic to 55 in 2022.

The coordinating team also conducted two teacher trainings during the year and visited teachers regularly. Because it was difficult to visit teachers during the pandemic, more time was devoted to these visits in 2022.

As for the PSA program, two tutor trainings were organized in Battambang during the year, in order to train new tutors and to allow the old ones to train for tutoring higher blocks of the program. **12 groups were accompanied in their localities, seven of which were new.** A student meeting was held in Battambang with 51 participants and a second one was held at the end of the year.

Finally, the CORDE team was invited to join events organized by the government for educators and teachers in the country. They used these events to raise awareness about the importance of moral education for children and the role of community schools in the development of villages. **As a result of these efforts, government officials and members of the commune and village education departments visited some of the community schools, offered their support, and donated teaching materials to the schools.**

KEY FIGURES

23 communities served

Community Schools

15 schools

520 children

28 teachers

PSA program

98 students

12 tutors

2 agricultural plots

EXPENSES IN 2022

Total:

€ 95,053.46

MFEA:

€ 76,042.76

Unity Foundation:

€ 14,010.69

Commune de Differdange:

€ 5,000.00



CENTRAL AFRICAN REPUBLIC | COMMUNITY SCHOOLS, PREPARATION FOR SOCIAL ACTION AND TRAINING CENTER

OUR PARTNER

Since 2003, the Ahdieh Foundation has been working to promote quality education by training and accompanying teachers and supporting the establishment of community schools in the Central African Republic. Some of these schools are among the best performing in national examinations. It also implements the PSA program, which has been used for several years during teacher training and in the context of groups of youth and adults around schools. Finally, the training center builds the capacity of organizations promoting community schools in French-speaking Africa. We have been supporting the Ahdieh Foundation since 2010.



HIGHLIGHTS OF 2022

In 2022, the Ahdieh Foundation organized meetings at different levels with local authorities, village leaders, members of civil society associations and community members to strengthen collaborative relationships towards the progress of communities.

New teacher trainers have been trained during this year. Some of these teacher trainers make accompaniment visits and help organize pedagogical reflection meetings to accompany the trained teachers and build their capacities once a quarter. **In addition, teacher trainings have been held in all regions of the country. Even the Kagas region, which had been deprived of capacity building for several years due to security conditions, was able to train teachers in 2022.** In the Ombella Mpoko region in the Plateaux, some 30 new teachers were registered for the first time as a direct result of meetings with community leaders.

As for the PSA program, tutor trainers have been trained to open groups in localities that have never had this program such as Batalimo, in the Plateaux, and Sibut, in the Kagas region. Thus, the PSA program is beginning to reach new communities this year. New groups have been formed and some students have graduated. The new capacities developed by the youth have enabled them to create socioeconomic initiatives, such as **the establishment of a carpentry business, the creation of a pharmacy, and the creation of classes for preschool children. Agricultural plots have been created at the level of schools and at the Ahdieh headquarters** so that the knowledge generated can be shared with the population.

KEY FIGURES

20 communities served

Community Schools

32 schools

7,517 children

233 teachers

PSA program

92 students

22 tutors

4 agricultural plots

28 backyard gardens

Training Center

8 organizations

18 individuals accompanied

EXPENSES IN 2022

Total:

€ 212,287.23

MFEA:

€ 169,829.79

Unity Foundation:

€ 36,957.45

NIF Foundation:

€ 4,000.00

Kärjeng Hëlleft:

€ 1,500.00



COLOMBIA | PREPARATION FOR SOCIAL ACTION

OUR PARTNER

Founded in 1989, FUNDAEC (the Spanish acronym for Foundation for the Application and Teaching of Science) is dedicated to building the capacity of local populations, especially in rural areas, to carry out actions and research related to the different processes that make up their social, economic, and cultural life. At the heart of FUNDAEC's efforts is the belief that knowledge plays a central role in the development of a population and that communities must not only have access to information but also be able to participate fully in the generation and application of knowledge. We have been supporting FUNDAEC's PSA program in Colombia since 2013.



HIGHLIGHTS OF 2022

In 2022, FUNDAEC held 45 community meetings in the different units, the purpose of which was to present the PSA program to promote the opening of new groups. These meetings resulted in the creation of 13 new PSA groups and 140 new participants joining the program.

At the heart of the PSA program is service to the community. As a result of their participation in the program, **37 service activities and three more complex service projects have been carried out by PSA groups.** These activities are diverse and cover three areas: education, health (for example, a mental health workshop carried out by the Los Corrales group), and agricultural production and livestock.

There are also **171 active productive projects, of which 163 are family production units in solidarity.** Among the productive projects, there are also **eight small enterprises,** which are more complex and consolidated. Some of them are supported by the seed fund established by FUNDAEC in 2021, which provides small loans to projects that have the potential to become sustained or grow. To ensure the well functioning of the seed fund, two members of the zonal coordination team ensure the financial follow-up on loans, coordinate productive projects, identify and propose projects to be supported, and then provide advice and follow-up to ensure that the projects work.

In general, FUNDAEC notes **a positive impact of these projects on the lives of participants: they contribute to the reduction of rural-urban migration, the strengthening of peasant economies and the improvement of family economies.**

KEY FIGURES

23 communities served

PSA program

359 students

42 tutors

12 agricultural plots

106 backyard gardens

EXPENSES IN 2022

Total:

€ 79,454.00

MFEA:

€ 47,856.02

Unity Foundation:

€ 8,857.99

City of Luxembourg:

€ 22,740.00



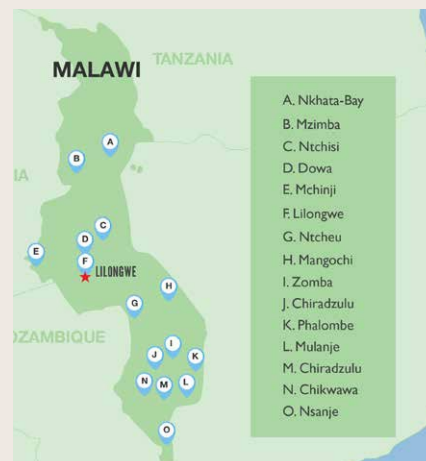
MALAWI | COMMUNITY SCHOOLS AND TRAINING CENTER

OUR PARTNER

Active since 2007 and recognized as an NGO in 2010, Bambino Foundation trains early childhood teachers in pedagogy, child care and nutrition, and supports the creation and capacity building of school committees. Based on its experience in this field, a training center has been established for organizations in other English-speaking African countries promoting community schools. We have been supporting Bambino Foundation since 2011.

HIGHLIGHTS OF 2022

The year 2022 was particularly intense for Bambino: instead of opening five new schools as is the case every year, our partner opened 18 schools this year due to high community demand, thus bringing the total number of schools to 95! **The schools accompanied by Bambino now represent 10% of the total number of preschools** registered by the Malawi National Statistics Office.



This accomplishment was made possible by the strong community involvement. Regular visits by coordinators have helped communities understand the importance of supporting teachers and school activities. **Village chiefs have also donated land to some of the schools so that they can construct school buildings.** Each of these schools has a parent-teacher association with 10 members, which represents 950 people who help with the administrative management of the schools. After these associations were formed, an orientation was conducted by Bambino to ensure that the administrative systems were systematic and uniform in all schools.

In a notable development, **15 communities, in collaboration with parent-teacher associations, launched community banks run by women.** Each month, each member contributes a small amount of money to the fund, which then acts as a microcredit bank where community members can borrow and repay at a prescribed interest rate. This money is used to pay school fees for their children, and some use it as capital to start their small businesses.

In addition, **Bambino currently accompanies 10 schools in maintaining small gardens for growing crops to supplement the nutrition of the children in their schools.** These schools serve as learning centers for agricultural activity and generate learning that can be disseminated to other schools that also wish to establish school gardens.

Finally, Bambino conducted a series of seminars and trainings with the Setsembiso Tsebunye Foundation of Eswatini, the Inshindo Foundation of Zambia, and the Ruaha Muongozo Foundation of Tanzania. The seminars were conducted virtually as well as physically in Malawi. Bambino also made several visits to these foundations during the year to learn how the different organizations manage their trainings and accompany their schools.

KEY FIGURES

51 communities served

Community Schools

95 schools

6,702 children

243 teachers

10 agricultural plots

Training Center

4 organizations

6 individuals accompanied

EXPENSES IN 2022

Total:

€ 183,098.93

MFEA:

€ 146,479.15

Unity Foundation:

€ 34,592.79

Diddeleng Hëlleft:

€ 1,500.00

Private donations:

€ 527.00



UGANDA | PREPARATION FOR SOCIAL ACTION

OUR PARTNER

Since its inception in 2007, Kimanya-Ngeyo Foundation for Science and Education has offered the PSA program to several thousand youth and adults representing a wide range of rural and peri-urban community members. **One of the foundation's strengths is in the area of agriculture;** it is engaged in an action research process to develop diversified, sustainable, high-yielding, ecologically sound production systems that are adapted to the realities facing smallholder farmers. We have been supporting Kimanya since 2009.



HIGHLIGHTS OF 2022

Over the past year, Kimanya has observed noticeable improvements in the quality of PSA groups, which in turn has helped strengthen the development of capabilities within participants and helped sustain participation in groups for longer periods of time. This progress has been made possible by a number of factors, including **a greater emphasis on completing the practical components of the program.**

The study of PSA texts on the environment led many groups to organize the cleaning of community boreholes and markets, the draining of wells, and the planting of trees. In the area of health, after the study of the unit *Health and Disease*, groups of tutors alongside participants conducted research on common diseases affecting children under five, in

collaboration with the village health teams attached to the Ministry of Health. In the community of Kikondo, for example, tutors and participants were able to identify a bedbug problem and successfully mobilize inhabitants to address it. Likewise, following the study of the *Nurturing Young Minds* unit, children's classes were established.

Throughout the year, the agriculture team helped participants **accompany more than 94 families to learn how to create and maintain backyard gardens that contribute to their nutritional and economic needs.** The team also supported tutors in establishing and maintaining diversified, high-yielding plots, which became a source of attraction and learning for the wider communities in which they are located. In the Wankole area of Kamuli, the plot has not only attracted the interest of neighbors, but it has allowed tutors to demonstrate some practices to families who have backyard gardens, and for local leaders to see firsthand how the PSA program can benefit their communities.

The success of the 2022 activities was largely due to Kimanya's strengthened collaboration with government officials at the district, sub-county, and especially village levels. In particular, Kimanya has strengthened its ability to conduct meetings that have helped leaders understand how the PSA program contributes to community development and to areas of common interest such as agriculture, community health, and environmental health. **Kimanya has even begun conducting training for local leaders** to increase their ability to read the reality of their communities and identify the challenges they want to address and the community members best able to help them, as well as other conversations about how to resolve their challenges.

KEY FIGURES

35 communities served

PSA Program

439 students

41 tutors

26 agricultural plots

424 backyard gardens

EXPENSES IN 2022

Total:

€ 109,130.00

MFEA:

€ 87,304.00

Unity Foundation:

€ 19,966.00

Private donations:

€ 1,860.00



ZAMBIA | COMMUNITY SCHOOLS AND PREPARATION FOR SOCIAL ACTION

OUR PARTNER

In order to address the reality of rural youth, Inshindo Foundation has been offering the PSA program since 2007, with a special focus on the agricultural component of the program, thereby improving agricultural practices and increasing food security in the regions where it operates. Over the years, Inshindo Foundation has built strong relationships with government authorities and other organizations, to the point that the agricultural methods of the PSA program have been used by the government to demonstrate good practices to local farmers. We have been supporting Inshindo Foundation since 2017, and since 2022, we have also been funding its Community Schools program.



HIGHLIGHTS OF 2022

A total of 20 teacher trainings were held in 2022, with over 130 teachers participating. Within the context of community schools and as a result of the teachers' study of PSA units, various social action initiatives were undertaken. For example, following the study of the health units, teachers and students conducted **health and nutrition campaigns for mothers and children** in collaboration with other organizations and the government. **Community schools also served as centers for immunization and reproductive health education in**

collaboration with other health organizations in the community. The teachers' study of the Environmental Issues unit strengthened their ability to lead conversations in the community to raise awareness of local and global environmental issues, and **students led tree-planting activities** as a result. Likewise, after the study of the Planting Crops unit and as part of the agricultural science program in the community schools, **teachers and students have created school gardens** and are promoting agricultural activities with families to contribute to their needs and support the schools.

Regarding the PSA program, 16 new groups were formed and participants engaged in numerous service activities within their communities. In the area of community agriculture, a total of 48 and 16 participants were involved in vegetable cultivation and compost production respectively as a result of their study of the Planting Crops unit; this was done in collaboration with 42 farmers. **The work in the context of high-efficiency diversified plots continued, as well as in the areas of soil restoration and water management using technologies such as polyculture, crop rotation, intercropping, compost and irrigation.** PSA students also engaged in practices in the areas of early childhood education, as part of their study of the text Nurturing Young Minds. A total of four participants and 100 children were involved in early childhood education practices in the communities of Katuyola, Kapidi and Nyangombe. They also conducted health awareness activities on malaria and the different types of worms that affect children.

Lastly, a noteworthy event of the year was that in April, the unit coordinator of Mwinilunga Central and the regional coordinator of the Community School programs were invited by the Mwinilunga radio station to present Inshindo Foundation, the programs implemented in the district and their impact.

KEY FIGURES

66 communities served

Community Schools

57 schools

4,818 children

137 teachers

PSA Program

467 students

27 tutors

17 agricultural plots

259 backyard gardens

EXPENSES IN 2022

Total:

€ 113,005.68

MFEA:

€ 90,404.54

Unity Foundation:

€ 22,601.14

VISITS

An unforgettable visit to our partner Inshindo Foundation in Zambia

In January 2022, we had the joy of traveling to Zambia for our very first visit to Inshindo Foundation since we began our partnership in 2017! While there, we met with the Inshindo team, visited community schools, PSA groups, plots and agricultural centers, and interacted with participants, tutors, coordinators, school committees and traditional chiefs. The maturity of the organization, the recognition it enjoys in the regions where it operates and the effects of the programs it implements, both on the individuals who take part in them and on their communities, were visible throughout the visit. To learn more, read our article *An unforgettable visit to our partner in Zambia* on our website!

1. Luna Congo, our project manager, with the Inshindo Foundation team in front of the national office in Kabwe.
2. Meeting with Inshindo Foundation regional and national coordinators at the national office.
3. Meeting with the Minestone Community School Parent Committee.
4. Visit the Ngungu Center for Community Agriculture.
5. With teachers and students from Gems Community School; meeting with the school's parent committee.
6. Preparation of a compost.
7. Meetings with participants, tutors and coordinators of the PSA program





5b



6



7a



7b



7c



7d





Four inspiring days visiting our partner Bambino Foundation in Malawi

In May 2022, we were fortunate to travel to Malawi to visit Bambino Foundation and have the opportunity to interact with our partner's team, visit five community schools, and talk with teachers, school committees, and parent-teacher associations. This visit highlighted three strengths of our partner organization: **1. the ownership of the schools by the communities, 2. the quality of the education provided, and 3. the fruitful collaboration established with the government.** To learn more, read our article *Four inspiring days visiting our partner Bambino Foundation in Malawi* on our website!

1. Luna Congo, our project manager and the national and regional staff of Bambino Foundation.
2. Meeting with the Mtchaya Nursery School Parent-Teacher Association.
3. Visit of Bambino Foundation offices.
4. Meeting with members of the management committee and the parent-teacher association of the Kapeska Junior Primary School.
5. Students and teachers in action at the Future Nursery School.
6. The Bvivi Chinzeze School.
7. The Kapeska Junior Primary School.
8. The Thiwi Community School plot.
9. Overview of the Thiwi Community School.







An inspiring week with Dr. Joseph Lample, guest from Uganda

The year could not end on a better note than with the visit of Dr. Joseph Lample, representative of our Ugandan partner organization, who joined us in Luxembourg for a week full of activities. Various events and meetings were organized to allow him to share experiences from the field with representatives of the MFEA, sponsors, students from various schools committed to the Sustainable Development Goals, and about 50 friends of Unity Foundation and actors from the socio-educational field, gathered for a round-table discussion at an evening event in our premises.

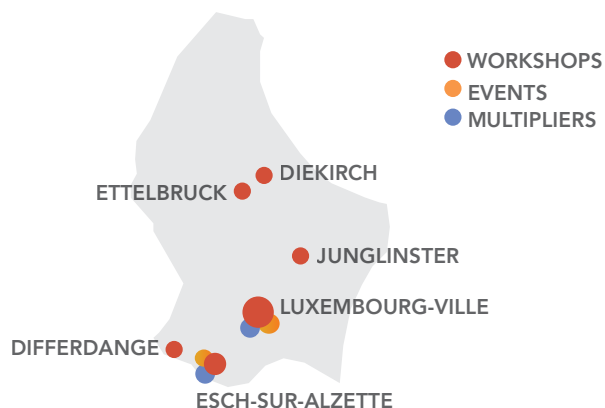
1. Meeting with the Ministry of Foreign and European Affairs.
2. A meeting between Joseph Lample and the Unity Foundation team.
3. Joseph Lample interviewed by journalist Stephanie Bodoni and Unity Foundation President Fernand Schaber and interacting with attendees after the event.
4. Intervention during the day "Global International Network" at the International School of Luxembourg.
5. A conversation with Joseph Lample in the offices of Linklaters.





DEVELOPMENT EDUCATION IN LUXEMBOURG

- **45 workshops** in the different communes of Luxembourg, involving **434 participants** and **57 educators**
- **5 events** organized reaching **350 people**
- **22 multipliers** of our workshops trained and accompanied



Some figures of our development education campaign in Luxembourg since 2016:



Since 2016, the continued support of the MFEA allows us to run a development education project in Luxembourg that aims to promote equity, social justice and universal education. **To do so, we contribute to the development of knowledge and capacities of young people, actors in the field of development and education and the general public.**

Our activities invite participants to identify and critically analyze the principles and practices at the heart of development, and to reflect on the nature of education that would enable everyone to become an active agent of social progress. Over the past five years, our activities have evolved from a single workshop exclusively for youth to a diverse but connected set of activities, reaching a wide audience ranging from high school students to adults, university students, and professionals in the socio-educational sector (teachers, school supervisors and educators).

Activities for youth consist of workshops with reflection, oral expression, art and service projects that allow them to discover their potential, their opportunities and their role in bringing about positive change in their own environment. Training is also provided for teachers and educators to independently facilitate our workshops and enable youth to unlock their potential on the long term. Finally, thanks to our close relationships with a growing number of NGOs and social institutions, we cultivate the exchange and sharing of knowledge and best practices on the themes of development and education. This objective is pursued through the organization of conferences aimed at bringing together various actors in a specific field (agriculture, education, local development to name a few) and events aimed at reaching the general public. Our website and our presence on social media also allow us to share our experiences and the principles, approaches and methods at the heart of our actions.

MAIN DEVELOPMENTS IN 2022



Our activities in schools

We started the year with five weeks of intervention with a class of 7th graders at Fieldgen High School. This was a great opportunity in two ways. First, it was the first time we were able to integrate our program into the students' formal curriculum and explore various development-related topics in depth. Secondly, it allowed us to create a close collaboration with the class teacher, who was able to co-construct the program and be trained in the workshops to facilitate them with us.

Another highlight of the year was the week we spent in March at the Aline Mayrisch private high school with a class of 7th graders. Organized with the active collaboration of two teachers, a young volunteer and singer, poet and therapist Mathieu Marie-Eugénie, the program consisted of a dozen workshops with the students to help them discover their potential and their role in improving society. The week was inspiring and unifying for the students, actively supported by Unity Foundation board



members, and culminated in a meeting with the school's principal, a class from the National Adult School and the director of the award-winning short film *Mercy's Blessing*. Gathered to view the short film and explore the issues addressed in it (justice, hope, privilege, sacrifice, etc.), the atmosphere and rich exchanges between all present left a lasting impression and inspired some of the students to get involved with Unity Foundation.

Other interventions throughout the year allowed us to gain more experience in the use of arts and service projects as tools for the learning and empowerment of youth. Our systematic invitation to workshop participants to become part of our multiplier network attracted five youths who were trained and accompanied to conduct the workshops in their own school and personal environments.

MAIN DEVELOPMENTS IN 2022



Raising awareness among the general public and the various actors of the Luxembourg socio-educational world

Collaboration is the key to progress! By promoting the exchange and sharing of knowledge and experiences with educators, teachers, development professionals and the general public, we participate in the capitalization and dissemination of good practices and contribute to advancing the discourse on development and on the role of education. Among the many events for meeting and sharing experiences in 2022, three deserve to be highlighted.

First of all, the year started with the organization of an online gathering bringing together about 40 different actors of the Luxembourg socio-educational field on the theme: **"Rethinking education, its actors and the values it transmits"**. We gave the floor to Hou Sopheap, executive director of CORDE, and to Marianne Barboni, member of the community house of Differdange in Luxembourg, in order to discuss their experiences on the theme.

The positive impact that education must have not only on the individual but also on the collective was a concept that was central to the approach of our two special guests, as was the role of service as an arena of selfless engagement where one develops their potential while participating in the betterment of society. Divided into small groups, participants had rich discussions on how to enable children and youth to be active agents of their own learning, rather than passive recipients of information, and how to cultivate a thirst for knowledge.

Another **informal working group in which we were involved in 2022 is composed of several public and associative structures** engaged in citizen participation. This group was created at the initiative of the integration advisors of some municipalities in order to facilitate the exchange of experiences on the implementation of development education activities, on relations with public institutions and on shared challenges. Rich in learning and opportunities, this space allows us to continue to familiarize ourselves with the Luxembourgish associative and institutional fabric, to learn from the experiences of others and to anticipate certain existing challenges and obstacles. The group continues its collaboration in 2023 through various projects of advocacy, knowledge capitalization and training in citizen participation.

Finally, as every year, the **consortium Cinéma du Sud ("Southern Cinema")**, of which we are a part, renewed its festival in 2022, this time in collaboration with the *Nuits de la Culture* as an ESCH22 event, and the city of Esch-sur-Alzette as part of the *Familljendag*. Both events reached an audience of more than 150 people – children, youth and adults – around the themes of multiculturalism and resilience. This new experience, on the town hall square in the open air and in a street of the Brill district, allowed us to meet different audiences and to address them in a more direct and interactive way.

If you are an institution or an actor in the socio-educational field interested in our programs and our vision, do not hesitate to contact us by email at info@unityfoundation.lu or by phone at +352 621 656 998.

A BIG THANK YOU TO OUR SUPPORTERS!

Doing good by blowing out your candles

In 2022, 13 friends of Unity Foundation used Facebook to raise €2,160.00 in donations for their birthday. We are grateful to each person who decided to replace their birthday gifts with a call to their friends and family to support our activities!

Commemorate with a gift

Donations to Unity Foundation in memory of deceased loved ones totalled €19,979.00 for our education projects. A beautiful way to honor those whose memory will remain forever in our hearts!

Payroll Giving

Our Payroll Giving campaign is growing! This was evident in 2022 with our partners Taleo Consulting and Advanzia Bank, some of whose employees contribute a few euros of their salary each month to Unity Foundation. With Payroll Giving, it is easy to get your company involved in philanthropy! Want to join us? Please contact us and together we can develop a partnership concept that meets your expectations.

They supported us in 2022:
a big thank you to them!

Companies:

Advanzia Bank
Bauco GmbH
GT Fiduciaires
Ireco Trading and Production
Jemmic
LA Immo
Linklaters
New Cité Gérances
RAFCO
Stratcom
Syneco
Taleo Consulting

Foundations:

NIF Foundation

Municipalities:

Commune de Beckerich
Diddeleng Hëlleft
Commune de Differdange
Kärjeng Hëlleft
Ville de Luxembourg

... and countless individuals!

OUR FINANCING

OUR COMMITMENT TO OUR LOCAL PARTNERS BETWEEN 2022 AND 2026

In accordance with our framework agreement with the MFEA,
our commitment to our six local partners between 2022-2026 totals:

€ 4,144,166.73

€ 3,232,000.00

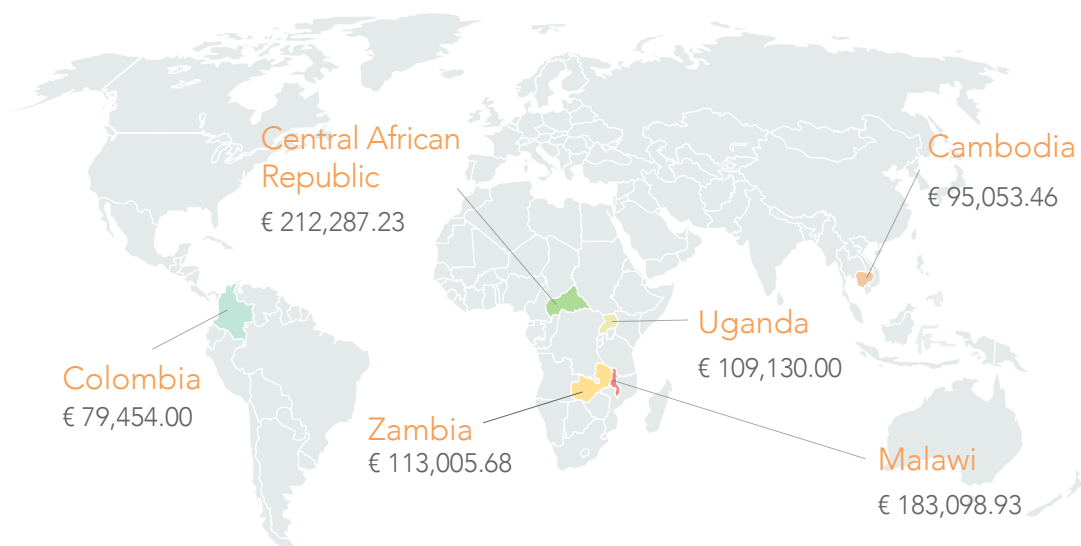
PART COVERED
BY THE MFEA

€ 912,166.68

PART COVERED BY
UNITY FOUNDATION

PROJECT EXPENDITURES IN 2022

The map below shows the amount of spending by each of our partners in 2022.



TOTAL PARTNER EXPENDITURES: € 792,029.31
EXPENDITURES FOR 2022 COVERED BY THE MFEA: € 617,916.26

DEVELOPMENT EDUCATION

The “Protagonists of Social Progress” project is co-financed by the MFEA at a rate of 75%.

TOTAL EXPENSES OF THE DEVELOPMENT
EDUCATION PROJECT IN 2022

€ 48,277.21

CO-FINANCING FROM THE MFEA IN 2022

€ 36,207.91

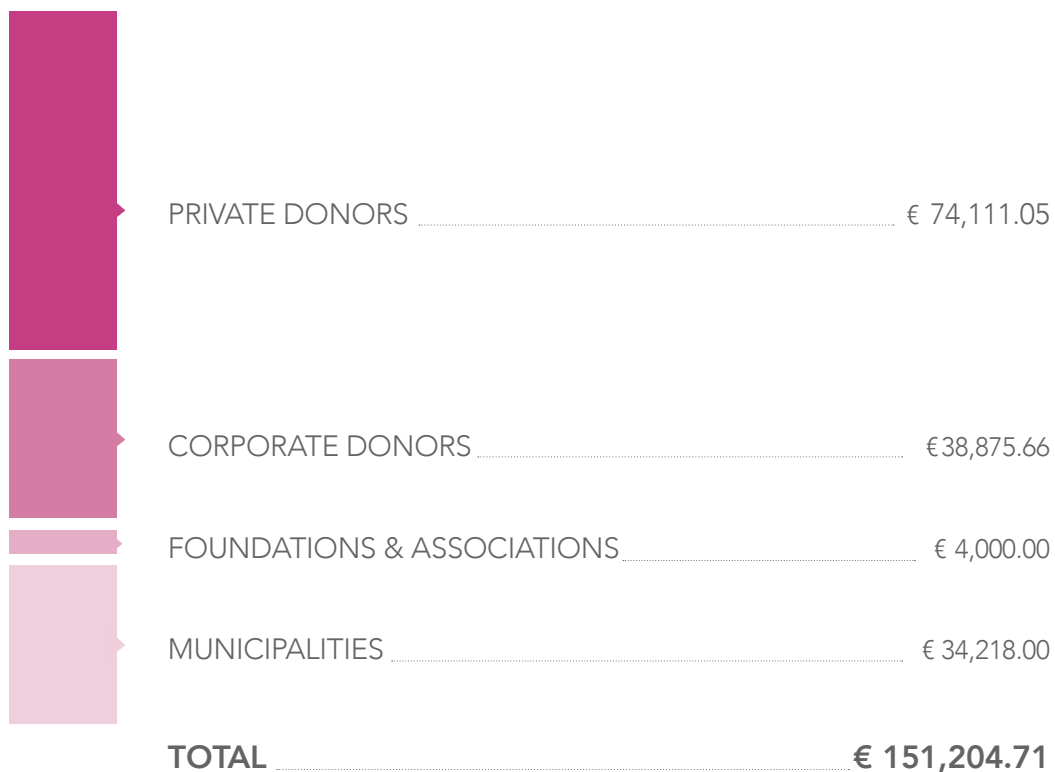
ADMINISTRATIVE FEES

The Ministry covers part of our administrative costs.

CONTRIBUTION FROM THE MFEA RECEIVED IN
2022 FOR OUR ADMINISTRATIVE COSTS

€ 93,705.40

WHERE OUR DONATIONS COME FROM



Audited annual accounts

Our accounts are audited every year and published with the Luxembourg Business Registry. Upon request, a copy of the published accounts can be provided.

Sound and transparent financial management

- Rigorous accounting by GT Fiduciaires
- Annual accounts audited by Statera Audit
- Founding member of the "Don en Confiance" association
- Tax relief for individuals and businesses





OUR TEAM

The Board of Directors



Fernand Schaber
President



Abbas Rafii
Vice president



Paola Dumet-Fusco
Treasurer



Paul Arbab
Administrator



Thomas Hueck
Administrator

The Office Team



Angela Roldán
Project and
Communication
Manager



Anne Cuvillier
Awareness and
Development
Education officer



Claudine Winkel
Administrative
support



Luna Congo
External collaborator
Project Management and
Communication Aid



Mina Neshvad
External collaborator
Development Education
and Administrative Aid
(since October 2022)



Yves Wiltgen
Office and Fundraising
Coordinator
(until May 2022)



Côme Uhart-Jouët
Project Manager
(until August 2022)



Sarah Tesch
Project Manager
(until March 2022)



TO CONTINUE TO CARRY OUT OUR ACTIONS, WE COUNT ON YOU!

Our bank details:

BIL: IBAN LU39 0028 1030 9750 0000

CCP: IBAN LU03 1111 1326 8384 0000

BCEE: IBAN LU33 0019 3755 0535 4000

Every donation contributes to unlock the potential of children and young people in Luxembourg and around the world and is tax deductible. Thank you very much for your trust and support!

Unity Foundation

29, Boulevard Prince Henri
L-1724 Luxembourg, Luxembourg

Phone: +352 621 656 998

Email: info@unityfoundation.lu

Discover all our work and news on
www.unityfoundation.lu

Editing: Erika Angeluti
Printing: Imprimerie Schlimé
Texts & photos: Unity Foundation



Unity Foundation

EDUCATION FOR EMPOWERMENT